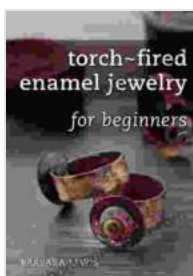


Unlock the Beauty of Torch Fired Enamel Jewelry: A Comprehensive Guide for Beginners

Welcome to the enchanting world of torch fired enamel jewelry making! This comprehensive guide will unlock the secrets of this captivating art form, empowering you to create stunning, vibrant pieces with ease. Whether you're a complete novice or eager to refine your skills, this step-by-step walkthrough will guide you through every aspect of the process.



Torch-Fired Enamel Jewelry for Beginners by Barbara Lewis

★★★★☆ 4.6 out of 5
Language : English
File size : 5628 KB
Text-to-Speech : Enabled
Screen Reader : Supported
Enhanced typesetting : Enabled
Print length : 119 pages



Chapter 1: Unveiling the Basics of Enamel Jewelry

What is Enamel Jewelry?

Enamel jewelry is a captivating art form that involves fusing finely ground glass to a metal surface. This fusion, achieved through a combination of heat and specialized techniques, creates vibrant, luminous designs that adorn various jewelry pieces.



Essential Materials and Tools

- **Torch:** A reliable torch is crucial for melting and fusing the enamel.
- **Enamel powder:** Finely ground glass available in a wide range of colors and opacities.

- **Metal base:** Typically copper or silver, which serves as the foundation for the enamel.
- **Kiln or heat gun:** For curing and annealing the enamel after application.
- **Safety glasses, gloves, and respirator:** For protection during the enameling process.
- **Other tools:** Such as tweezers, brushes, and files, to assist in enamel application and manipulation.

Chapter 2: Essential Techniques for Beginners

Preparing the Metal Base

Before enameling, the metal base must be meticulously cleaned to ensure proper adhesion. Use a mild abrasive cleaner and a soft brush to remove any dirt or oils.

Applying Enamel Powder

Using a fine brush or sifter, apply the enamel powder evenly onto the prepared metal surface. Gentle tapping or shaking the piece can help distribute the powder evenly.

Melting and Fusing the Enamel

Employing a torch, carefully heat the enamel powder until it melts and flows smoothly over the metal base. Avoid overheating, as this can cause the enamel to bubble or burn.

Curing and Annealing

Once the enamel has melted and fused, it must be cured in a kiln or using a heat gun. Annealing, a controlled cooling process, helps strengthen and

stabilize the enamel.

Troubleshooting Common Issues

In this section, address potential challenges beginners may encounter during the enameling process, such as bubbling, peeling, and discoloration. Provide practical solutions to overcome these issues.

Chapter 3: Safety Precautions in Enamel Jewelry Making

Protecting Yourself from Fumes

Enameling involves heating glass powder, which releases fumes. It's crucial to work in a well-ventilated area and wear a NIOSH-approved respirator to protect your lungs.

Handling High Temperatures

The enameling process involves intense heat. Always wear heat-resistant gloves and safety glasses to avoid burns. Keep flammable materials away from the work area.

Understanding Chemical Sensitivity

Some individuals may be sensitive to the chemicals used in enamel, such as fluxes and solvents. Wear gloves when handling these materials and avoid prolonged exposure.

Fire Safety and Emergency Preparedness

Have a fire extinguisher readily available in your work area. In case of a fire, evacuate immediately and call for professional help.

Chapter 4: Inspiring Design Ideas for Beginners

Exploring Color Combinations

Experiment with various color combinations to create unique and eye-catching designs. Consider complementary colors, analogous colors, and monochromatic schemes.

Incorporating Patterns and Textures

Add visual interest by incorporating patterns and textures into your enamel jewelry. Use stencils, tape, or wire to create geometric designs, or experiment with different enameling techniques to achieve unique textures.

Mixing Translucent and Opaque Enamels

Combine translucent and opaque enamels to create depth and dimension in your designs. Translucent enamels allow light to pass through, while opaque enamels provide a solid, vibrant color.

Embracing Asymmetry and Imperfections

Don't strive for perfection! Embrace the beauty of asymmetry and imperfections in your enamel jewelry. These unique characteristics add character and charm to each piece.

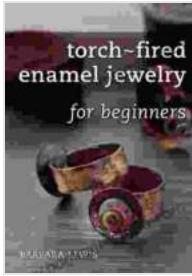
Congratulations on embarking on your torch fired enamel jewelry making journey! With practice, patience, and a passion for creativity, you can master this enchanting art form. Remember to prioritize safety, explore your artistic vision, and let your imagination soar. As you hone your skills, you'll create stunning, one-of-a-kind enamel jewelry pieces that will captivate and inspire for years to come.

Torch-Fired Enamel Jewelry for Beginners by Barbara Lewis

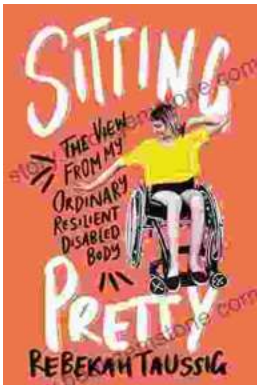
★★★★☆ 4.6 out of 5

Language : English

File size : 5628 KB



Text-to-Speech : Enabled
Screen Reader : Supported
Enhanced typesetting : Enabled
Print length : 119 pages



The View From My Ordinary Resilient Disabled Body

In a world where normalcy is often defined by narrow and exclusionary standards, I stand as a testament to the boundless diversity and resilience of the...



The Rise of the Jain Two: A Monument to Naval Supremacy

In the vast expanse of the world's oceans, where the ebb and flow of tides dictate the rhythm of nations, a new era of maritime dominance is on...