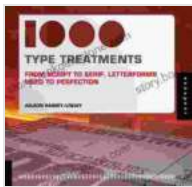


From Script to Serif: Letterforms Used to Perfection

The written word has come a long way since its humble beginnings in ancient scripts. Over the centuries, letters have evolved from simple symbols to complex and elegant forms that we use today. In this article, we will explore the history and evolution of letterforms, from their origins in ancient scripts to their modern-day use in typography and design.



1,000 Type Treatments: From Script to Serif, Letterforms Used to Perfection by Wilson Harvey

★★★★☆ 4.4 out of 5

Language : English

File size : 55522 KB

Text-to-Speech: Enabled

Screen Reader: Supported

Print length : 440 pages



The Origins of Letterforms

The earliest known forms of writing date back to around 3500 BC and were developed in Mesopotamia and Egypt. These early scripts were primarily used for record-keeping and accounting purposes and consisted of simple symbols that represented words or syllables. Over time, these symbols evolved into more complex forms, and the first alphabets emerged around 1500 BC.

The first alphabets were developed in the Middle East and consisted of a limited number of symbols that represented the sounds of the spoken language. These alphabets were quickly adopted by other cultures and spread throughout the world. By the 5th century BC, the Greek alphabet had emerged, and it is from this alphabet that our modern-day Roman alphabet is derived.

The Development of Script and Serif Letterforms

The Roman alphabet was originally written in a script form, with letters that were connected together. Over time, a more formal style of writing developed, in which the letters were separated and given more serifs. Serifs are the small strokes that are added to the ends of the letters. They serve to make the letters more legible and to improve their overall appearance.

The first serif fonts were developed in the 15th century by Italian scribes. These fonts were based on the handwriting of the time and were used in the printing of early books. The popularity of serif fonts continued to grow throughout the Renaissance and Baroque periods, and they remain one of the most popular types of fonts in use today.

The Rise of Sans-Serif Letterforms

In the 19th century, a new style of letterform emerged called sans-serif. Sans-serif fonts do not have serifs, and they are characterized by their clean and modern appearance. Sans-serif fonts were originally used in industrial applications, but they quickly became popular in advertising and graphic design. Today, sans-serif fonts are widely used in a variety of applications, including web design, print design, and branding.

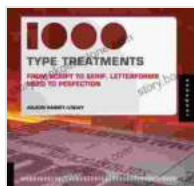
Letterforms in Modern Design

Letterforms play a vital role in modern design. They are used to communicate information, create a mood, and establish a brand identity. The choice of letterform can have a significant impact on the overall look and feel of a design.

When choosing a letterform, it is important to consider the intended audience, the purpose of the design, and the overall tone of the piece. Serif fonts are often used in more formal settings, such as books and magazines. Sans-serif fonts are more common in informal settings, such as websites and marketing materials.

In addition to their functional role, letterforms can also be used to create a unique and memorable design. By experimenting with different fonts, sizes, and colors, designers can create letterforms that are both visually appealing and informative.

Letterforms have come a long way since their origins in ancient scripts. Today, they are an essential part of our written language and play a vital role in design. By understanding the history and evolution of letterforms, we can better appreciate their beauty and power.



1,000 Type Treatments: From Script to Serif, Letterforms Used to Perfection by Wilson Harvey

★★★★☆ 4.4 out of 5

Language : English

File size : 55522 KB

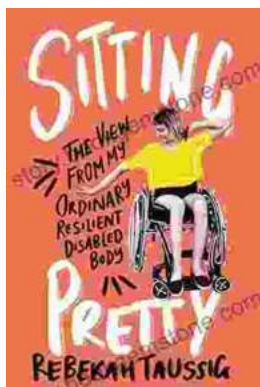
Text-to-Speech : Enabled

Screen Reader : Supported

Print length : 440 pages

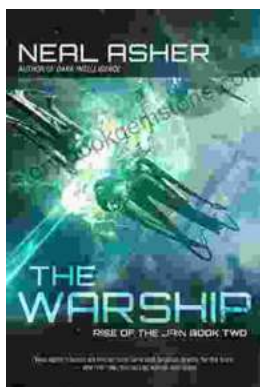
FREE

DOWNLOAD E-BOOK



The View From My Ordinary Resilient Disabled Body

In a world where normalcy is often defined by narrow and exclusionary standards, I stand as a testament to the boundless diversity and resilience of the...



The Rise of the Jain Two: A Monument to Naval Supremacy

In the vast expanse of the world's oceans, where the ebb and flow of tides dictate the rhythm of nations, a new era of maritime dominance is on...